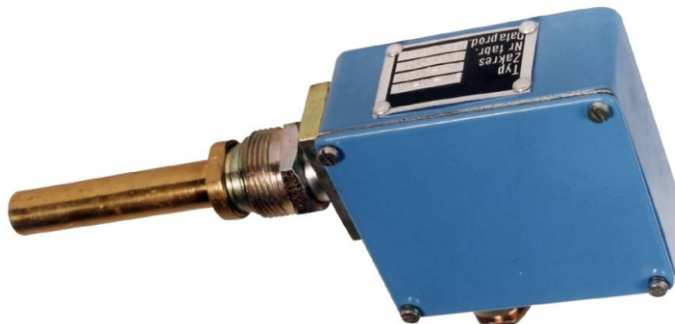


ELECTRIC TWO-TERM TEMPERATURE SWITCHES type ERT-01



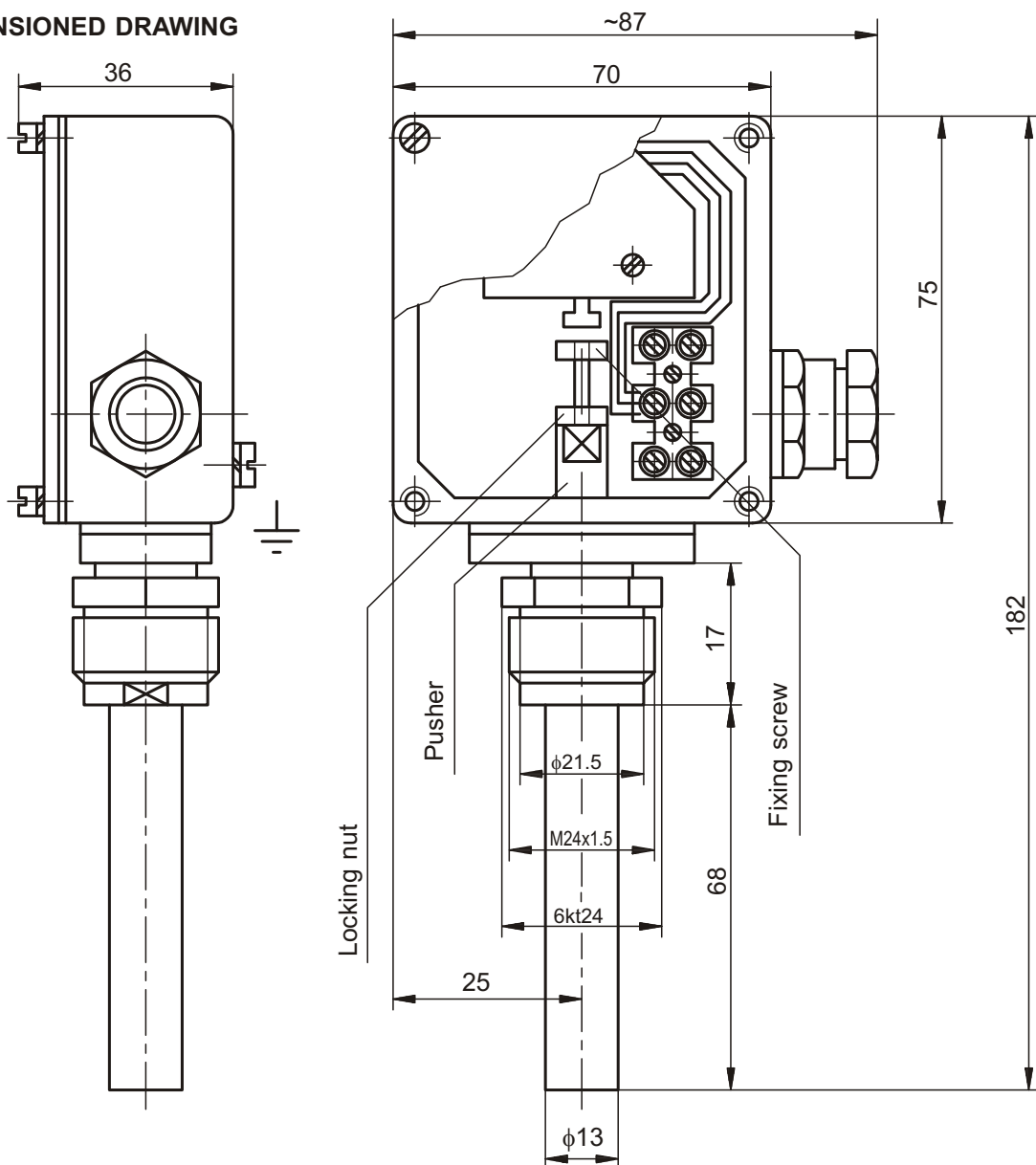
- control range of temperature from 30°C to 100°C
- protection degree IP55
- resistance to vibration

THE ELECTRIC TEMPERATURE SWITCHES ARE DESIGNED FOR CONTROL IN SUCH SYSTEMS WHEREIN IT IS NECESSARY TO MAINTAIN CONSTANT TEMPERATURE BY MEANS CHANGING IN THE INFLOW CONDITIONS OF ENERGY MEDIUM, FOR E. G. BY CONTROLLING THE ELECTRO-MAGNETIC VALVES, SWITCHING-ON OF HEATING ELEMENTS, PUMPS, FANS, ETC. THANKS TO RESISTANCE TO SHOCKS AND VIBRATIONS THEY CAN BE APPLIED IN THE TRACTION DIESEL AND MARINE ENGINES. MOREOVER, THE UNITS CAN BE APPLIED AS SIGNALLING ELEMENTS OF TEMPERATURE EXCEEDING OR TEMPERATURE DROP IN VARIOUS INDUSTRIAL SYSTEMS.

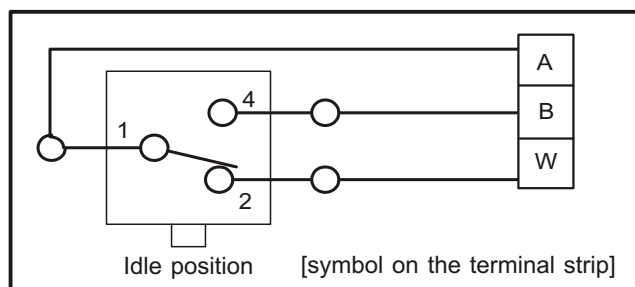
TECHNICAL DATE

Parameters	ERT-01-00	ERT-01-01
Control range	30...70°C	70...110°C
Repeatability	±1.5°C	
Sensor diameter	13 mm	
Dead zone	≤4°C	
Sensor lenght	68 mm	
Time constant	30 s	
Fixing thread	M24 x 1.5	
Switching frequency	60 connections/h	
Durability	0,1x10 ⁶ functions	
Resistance to vibrations	0...70 Hz at 6 g	
Resistance to shocks	10 g	
Ambient temperature	-20°C...+80°C	
Switched current	U _e = 400V; 50...60Hz; 1A; AC15 U _e = 220V=; 0,5 A; DC13	
Mass	~0.5kg	
Overheating temperature from the setpoint	20°C	
Permissible pressure of the medium	6.3 MPa	

DIMENSIONED DRAWING



ELECTRIC CIRCUIT DIAGRAM



ORDERING

One should give the in the order: switch full name and type, e.g.:

Electric two-term temperature switch type ERT-01-00 (52-56°C)

The right of introducing design changes in the product, without deteriorating of its operation parameters, is reserved.