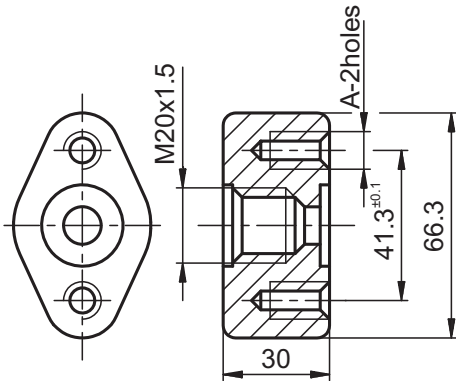




ASSEMBLY EQUIPMENT CATALOGUE

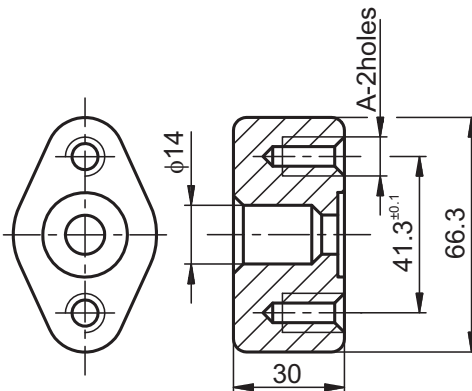
1. INSERTS FOR TRANSMITTERS



1.1. Insert with thread M20 x 1.5

The insert enables to connect the impulse tubes to the valve (manifold) and transmitters.

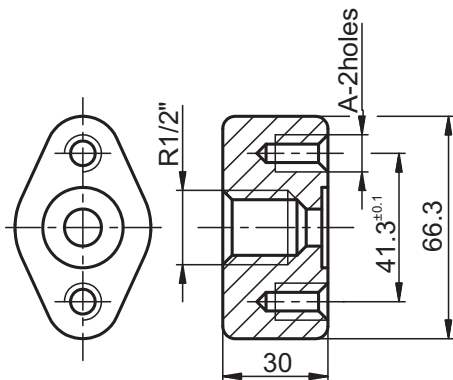
DRAWING No.	DIMENSION A	MATERIAL
ME1-0360-1	M12	15HM
ME1-0360-3	12.5dia. (straight through)	
ME1-0360-2	M12	1H18N9T
ME1-0360-4	12.5dia. (straight through)	



1.2. Insert with 14 dia. hole

The insert enables to connect the impulse tubes to the valve (manifold) and transmitters.

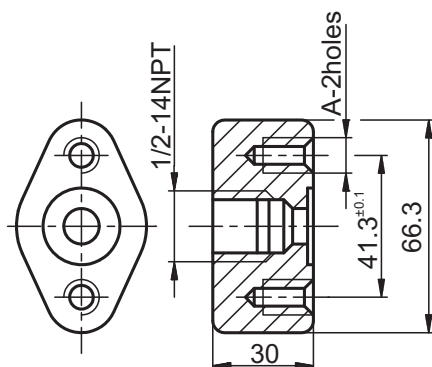
DRAWING No.	DIMENSION A	MATERIAL
ME1-0414-1	M12	15HM
ME1-0414-3	12.5dia. (straight through)	
ME1-0414-2	M12	1H18N9T
ME1-0414-4	12.5dia. (straight through)	



1.3. Insert with thread R1/2"

The insert enables to connect the impulse tubes to the valve (manifold) and transmitters.

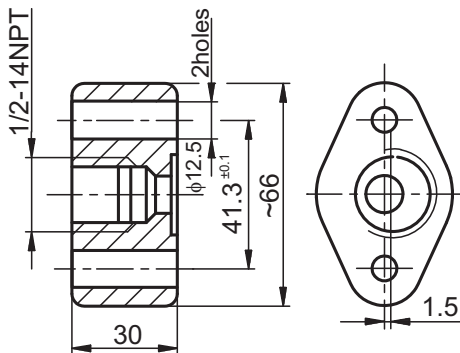
DRAWING No.	DIMENSION A	MATERIAL
ME1-0362-1	M12	15HM
ME1-0362-3	12.5dia. (straight through)	
ME1-0362-2	M12	1H18N9T
ME1-0362-4	12.5dia. (straight through)	



1.4. Insert with thread 1/2 - 14 NPT

The insert enables to connect the impulse tubes to the valve (manifold) and transmitters.

DRAWING No.	DIMENSION A	MATERIAL
ME1-0457-1	M12	15HM
ME1-0457-3	12.5dia. (straight through)	
ME1-0457-2	M12	1H18N9T
ME1-0457-4	12.5dia. (straight through)	

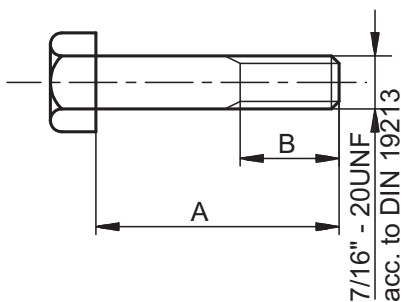


1.5. Insert with thread 1/2 - 14 NPT

The insert enables to connect the impulse tubes to the valve (manifold) and transmitters.

DRAWING No.	MATERIAL
ME1-0465-1	15HM
ME1-0465-2	1H18N9T

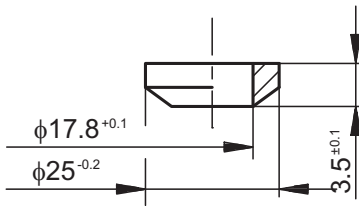
2. VALVES (MANIFOLDS) EQUIPMENT



2.1. Special screw 7/16" - 20 UNF

The screw enables to connect the valves (manifolds) MEZ-type and inserts to transmitters of Emerson make and others.

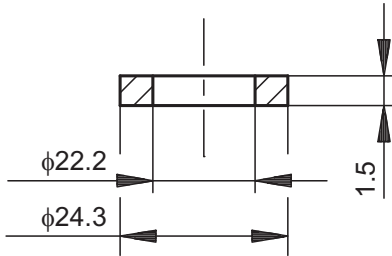
DRAWING No.	DIMENSIONS		MATERIAL
	A	B	
ME1-0369-1	60	25	15HM
ME1-0369-2	60	25	316
ME1-0369-3	16	Thread on the entire length	15HM
ME1-0369-4	16		316
ME1-0369-5	50	25	15HM
ME1-0369-6	50	25	316
ME1-0369-7	90	30	15HM
ME1-0369-8	90	30	316
ME1-0369-9	55	30	15HM
ME1-0369-10	55	30	316
ME1-0369-11	75	30	15HM
ME1-0369-12	75	30	316



2.2. Seal

The seal enables to seal the passage between the valve (manifold) and transmitter or insert.

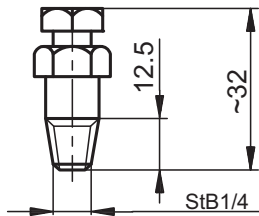
DRAWING No.	MATERIAL
ME1-0148	Teflon



2.3. Seal

The seal enables to seal the passage between the complete connector and other detail.

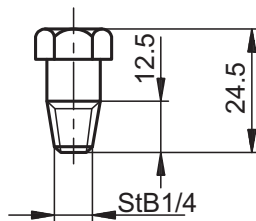
DRAWING No.	MATERIAL
ME1-0149-1	1H18N9T



2.4. Deaerating element

The deaerating element enables to close and deaerate the transmitter measuring chambers.

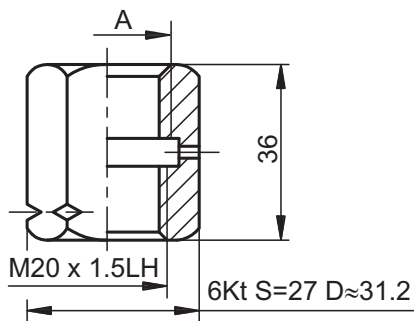
DRAWING No.	MATERIAL
ME2-0430-1	15HM
ME2-0430-2	1H18N9T



2.5. Hole plug

The hole plug (stopper) enables close the transmitter measuring chambers.

DRAWING No.	MATERIAL
ME1-0459-1	15HM
ME1-0459-2	1H18N9T

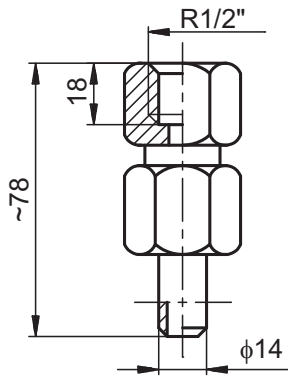


2.6. "Roman" nut

"Roman" nut makes possibly the connection of two manometric ends.

DRAWING No.	DIMENSION A	MATERIAL
ME1-0421-1	M20 x 1.5	15HM
ME1-0421-2	M20 x 1.5	1H18N9T
ME1-0421-3	G1/2"	15HM
ME1-0421-4	G1/2"	1H18N9T
ME1-0421-5	R1/2"	15HM
ME1-0421-6	R1/2"	1H18N9T

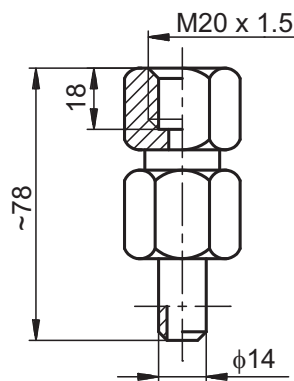
3. IMPULSE CONNECTORS



3.1. Complete connector with thread G1/2"

The complete connector allows to connect the impulse tubes to the measuring instrument with manometric thread G1/2".

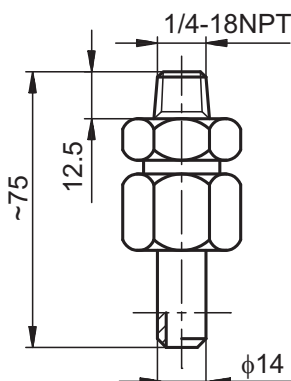
DRAWING No.	MATERIAL	φ OF ENDS
ME2-0401-1	15HM	ball-end φ 14
ME2-0401-2	316	ball-end φ 14
ME2-0401-3	15HM	ball-end φ 12
ME2-0401-4	316	ball-end φ 12
ME2-0401-5	15HM	flat-end φ 14
ME2-0401-6	316	flat-end φ 14
ME2-0401-7	15HM	clamping ring φ 14
ME2-0401-8	316	clamping ring φ 14



3.2. Complete connector with thread M20 x 1.5

The complete connector allows to connect the impulse tubes to the measuring instrument with manometric thread M20 x 1.5

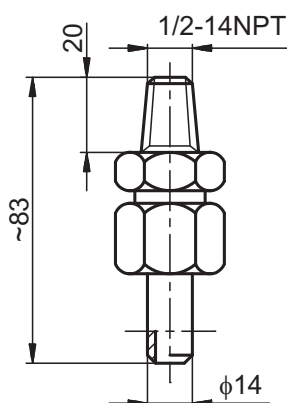
DRAWING No.	MATERIAL	φ OF ENDS
ME2-0454-1	15HM	ball-end φ 14
ME2-0454-2	316	ball-end φ 14
ME2-0454-3	15HM	ball-end φ 12
ME2-0454-4	316	ball-end φ 12
ME2-0454-5	15HM	flat-end φ 14
ME2-0454-6	316	flat-end φ 14
ME2-0454-7	15HM	clamping ring φ 14
ME2-0454-8	316	clamping ring φ 14



3.3. Complete connector with thread 1/4 - 18NPT

The complete connector allows to connect the impulse tubes to the measuring instrument with threaded hole 1/4-18NPT.

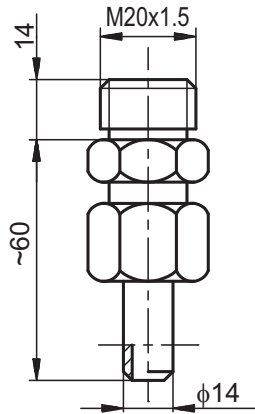
DRAWING No.	MATERIAL	φ PIPES
ME2-0635-1	15HM	φ 14 for welding
ME2-0635-2	316	φ 14 for welding
ME2-0635-3	15HM	φ 12 for welding
ME2-0635-4	316	φ 12 for welding
ME2-0635-5	15HM	φ 14 clamping ring
ME2-0635-6	316	φ 14 clamping ring
ME2-0635-7	15HM	φ 12 clamping ring
ME2-0635-8	316	φ 12 clamping ring



3.4. Complete connector with thread 1/2 - 14NPT

The complete connector allows to connect the impulse tubes to the measuring instrument with threaded hole 1/2-14NPT.

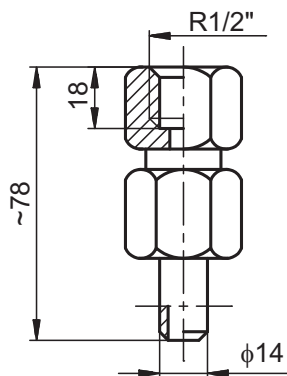
DRAWING No.	MATERIAL	φ ENDS
ME2-0634-1	15HM	φ 14 for welding
ME2-0634-2	316	φ 14 for welding
ME2-0634-3	15HM	φ 12 for welding
ME2-0634-4	316	φ 12 for welding
ME2-0634-5	15HM	φ 14 clamping ring
ME2-0634-6	316	φ 14 clamping ring
ME2-0634-7	15HM	φ 12 clamping ring
ME2-0634-8	316	φ 12 clamping ring



3.5. Complete connector

The complete connector enables to connect the impulse pipes with the instrumentation.

DRAWING No.	MATERIAL	φ ENDS
ME2-0458-1	15HM	ball-end φ 14
ME2-0458-2	316	ball-end φ 14
ME2-0458-3	15HM	ball-end φ 12
ME2-0458-4	316	ball-end φ 12
ME2-0458-5	15HM	flat-end φ 14
ME2-0458-6	316	flat-end φ 14
ME2-0458-7	15HM	clamping ring φ 14
ME2-0458-8	316	clamping ring φ 14

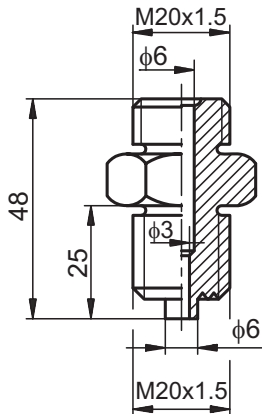


3.6. Complete connector with thread R 1/2"

The complete connector enables to connect the impulse tube for the measuring instrument with manometric thread R 1/2"

DRAWING No.	MATERIAL	φ ENDS
ME2-0695-1	15HM	ball-end φ 14
ME2-0695-2	316	ball-end φ 14
ME2-0695-3	15HM	ball-end φ 12
ME2-0695-4	316	ball-end φ 12
ME2-0695-5	15HM	flat-end φ 14
ME2-0695-6	316	flat-end φ 14
ME2-0695-7	15HM	clamping ring φ 14
ME2-0695-8	316	clamping ring φ 14

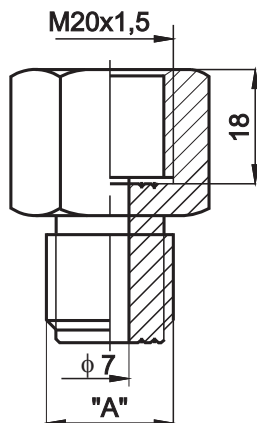
4. REDUCTION PIPES



4.1. Reduction pipe

The reduction pipe enables to connect the measuring instrument with pressure installation.

DRAWING No.	MATERIAL	THREAD "A"
EP1-0945-1	St5	M20x1,5
EP1-0945-2	1H18N9T	M20x1,5
EP1-0945-3	St5	1/2" - 14" NPT
EP1-0945-4	1H18N9T	1/2" - 14" NPT



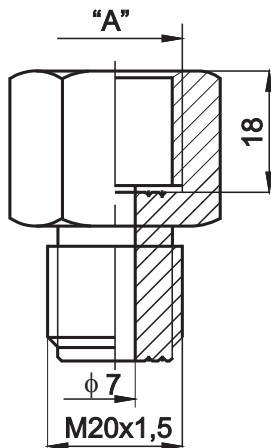
4.2. Reduction pipe

The reduction pipe enables to connect the measuring instrument with pressure installation.

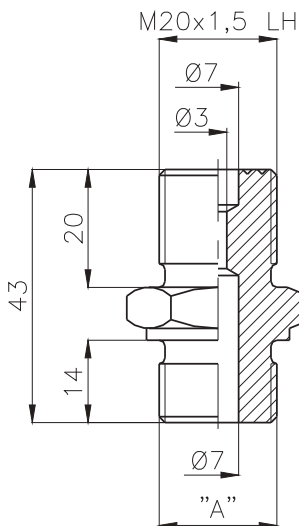
DRAWING No.	MATERIAL	THREAD "A"
ME1-0691-1	15HM	G 1/2
ME1-0691-2	15HM	R 1/2
ME1-0691-3	15HM	1/2" NPT
ME1-0691-4	15HM	1/4" NPT
ME1-0691-5	15HM	M12x1.5
ME1-0691-6	15HM	G 1/4"
ME1-0691-11	316	G 1/2
ME1-0691-12	316	R 1/2
ME1-0691-13	316	1/2" NPT
ME1-0691-14	316	1/4" NPT
ME1-0691-15	316	M12x1.5
ME1-0691-16	316	G 1/4"

4.3. Reduction pipe

The reduction pipe enables to connect the measuring instrument with pressure installation.



DRAWING No.	MATERIAL	THREAD "A"
ME1-0694-1	15HM	G 1/2
ME1-0694-2	15HM	R 1/2
ME1-0694-3	15HM	1/2" NPT
ME1-0694-4	15HM	1/4" NPT
ME1-0694-5	15HM	M12x1.5
ME1-0694-6	15HM	G 1/4"
ME1-0694-11	316	G 1/2
ME1-0694-12	316	R 1/2
ME1-0694-13	316	1/2" NPT
ME1-0694-14	316	1/4" NPT
ME1-0694-15	316	M12x1.5
ME1-0694-16	316	G 1/4"

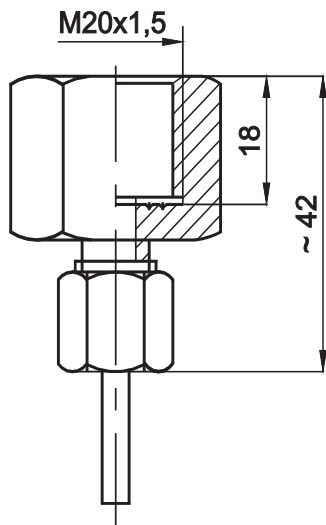


4.4 Redukcja

DRAWING No.	MATERIAL	THREAD
ME1-0705-1	15HM	R1/2"
ME1-0705-2	1H18N9T	R1/2"

4.5. Reduction pipe

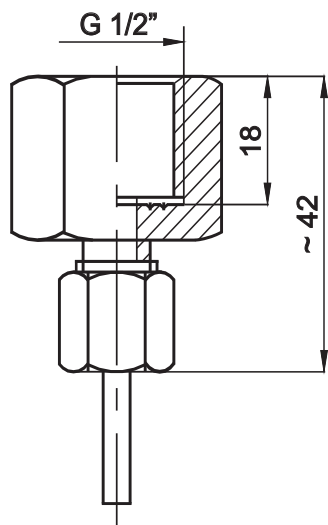
The reduction pipe enables to connect the measuring instrument with pressure installation.



DRAWING No.	MATERIAL	φ END
ME2-0693-01	Brass	φ 6x1 PE
ME2-0693-02	Brass	φ 6x1 CU
ME2-0693-03	Brass	φ 8x1 PE
ME2-0693-04	Brass	φ 8x1 CU
ME2-0693-11	316	φ 6x1 PE
ME2-0693-12	316	φ 6x1 Stainless steel
ME2-0693-13	316	φ 8x1 PE
ME2-0693-14	316	φ 8x1 Stainless steel

4.6. Reduction pipe

The reduction pipe enables to connect the measuring instrument with pressure installation.



DRAWING No.	MATERIAL	φ END
ME2-0692-01	Brass	φ 6x1 PE
ME2-0692-02	Brass	φ 6x1 CU
ME2-0692-03	Brass	φ 8x1 PE
ME2-0692-04	Brass	φ 8x1 CU
ME2-0692-05	316	φ 6x1 PE
ME2-0692-06	316	φ 6x1 Stainless steel
ME2-0692-07	316	φ 8x1 PE
ME2-0692-08	316	φ 8x1 Stainless steel

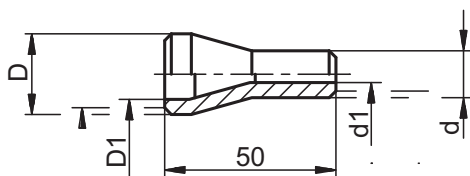
4.7. Reduction pipe

The reduction pipe enables to connect the impulse tubes at different diameters.

One can order different diameters D and d, according to the order (max to φ50) for e.g.:

Reduction pipe ME1-...-1

D=16mm; d=12mm; D1=12mm; d1=8mm



D	16	25	d	12	16
D1	10,2	17	d1	6	10

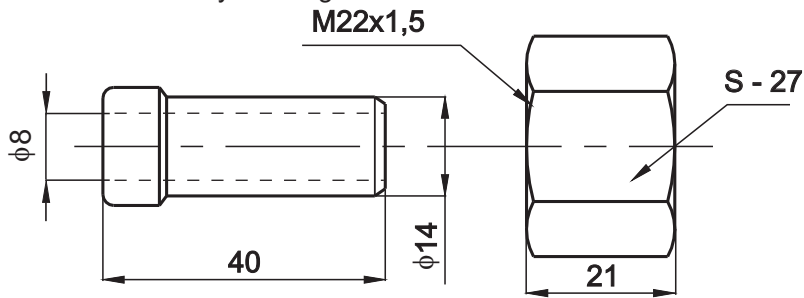
DRAWING No.	MATERIAL
ME1-0690-1	20
ME1-0690-2	15HM
ME1-0690-3	10H2M
ME1-0690-4	1H18N9T
ME1-0690-5	13HMF

5. IMPULSE ENDS

5.1. Ball-end

5.2. Nut

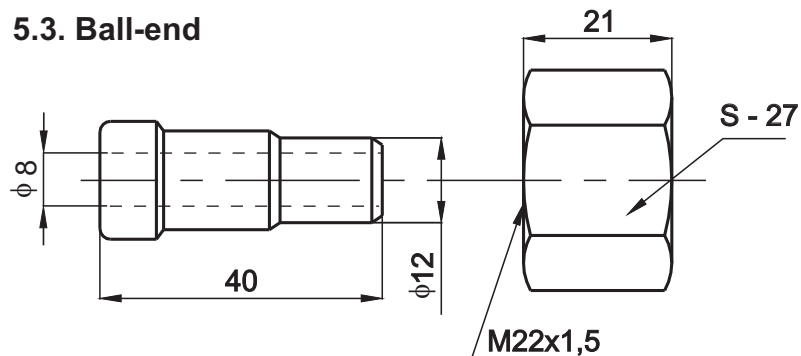
The ball-end enables to connect installation with transmitter by welding method.



BALL-END ϕ 14	
DRAWING No.	MATERIAL
EP1-0886-2	15 HM
EP1-0886-4	316
EP1-0886-5	13 HMF

NUT M22x1,5	
DRAWING No.	MATERIAL
EP1-1100-2	15 HM
EP1-1100-1	316
EP1-1100-3	13 HMF

5.3. Ball-end



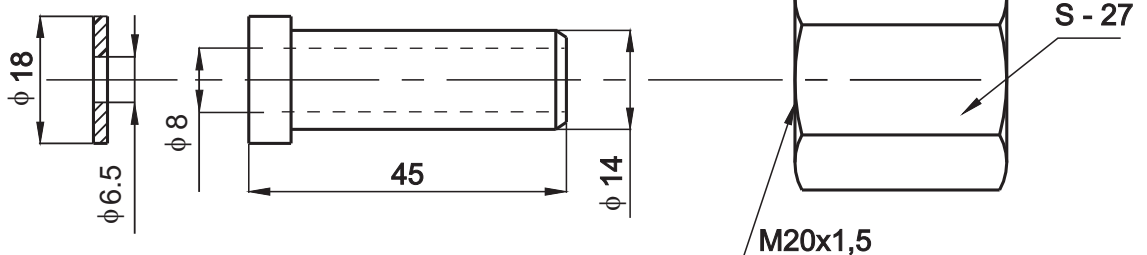
BALL-END ϕ 14	
DRAWING No.	MATERIAL
ME1-0388-1	15 HM
ME1-0388-2	316
ME1-0388-5	13 HMF

NUT M22x1,5	
DRAWING No.	MATERIAL
EP1-1100-2	15 HM
EP1-1100-1	316
EP1-1100-3	13 HMF

5.6. Nut

5.4. Washer

5.5. Flat-end



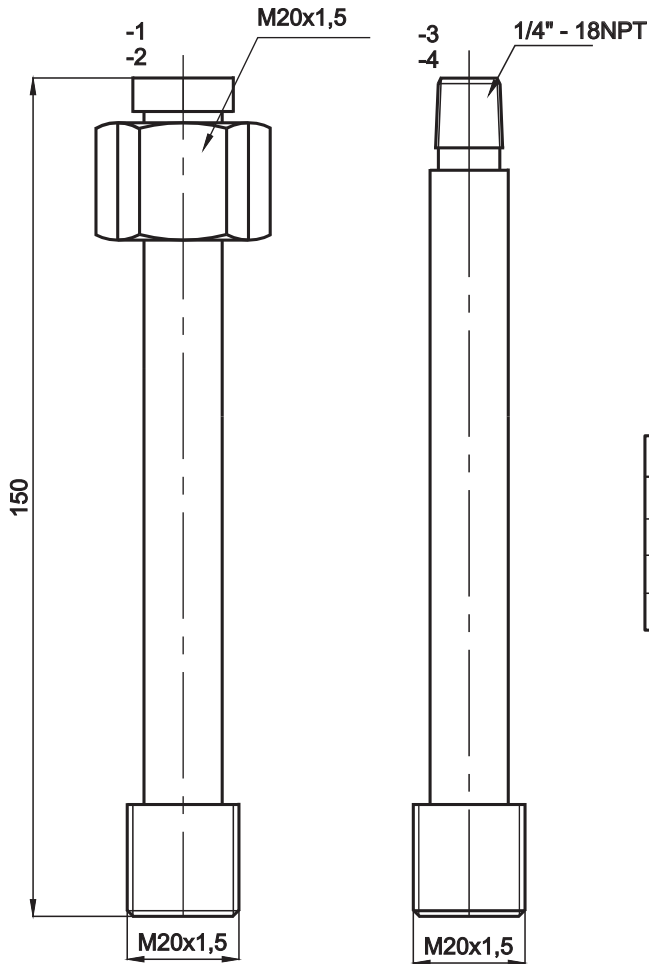
WASHER ϕ 18 / ϕ 6,5 / 2	
DRAWING No.	MATERIAL
ME1-0424-1	M1E
ME1-0424-2	316
ME1-0424-3	Tarflen

FLAT-END ϕ 14	
DRAWING No.	MATERIAL
ME1-0658-1	15 HM
ME1-0658-2	1H18N9T
ME1-0658-3	13 HMF
ME1-0658-4	316L

NUT M20x1,5	
DRAWING No.	MATERIAL
ME1-0657-1	15 HM
ME1-0657-2	1H18N9T
ME1-0657-3	13 HMF
ME1-0657-4	316L

5.7. Assembly ferrule

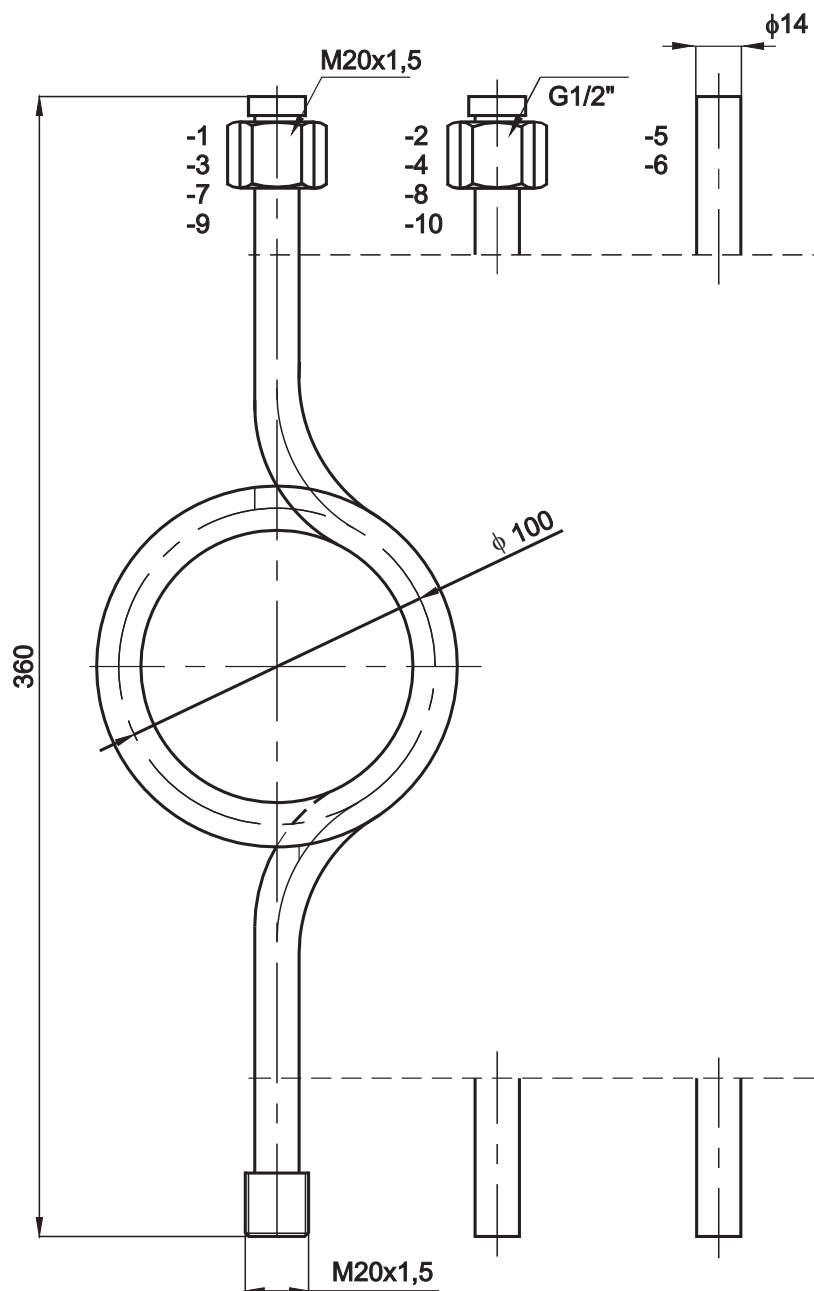
The assembly ferrule enables to connect transmitters or manometers with installation.



DRAWING No.	MATERIAL
ME2-0696-1	R35
ME2-0696-2	1H18N9T
ME2-0696-3	R35
ME2-0696-4	1H18N9T

5.8. Loop-and-syphon tube

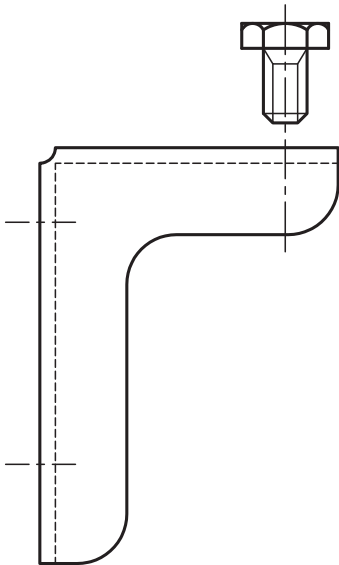
The loop-and-syphon tube is used in decrease medium temperature, which pressure has to be measured by the transmitter.



DRAWING No.	MATERIAL	GLAND
ME2-0697-1	R35	M20x1,5
ME2-0697-2	R35	G1/2"
ME2-0697-3	1H18N9T	M20x1,5
ME2-0697-4	1H18N9T	G1/2"
ME2-0697-5	R35	----
ME2-0697-6	1H18N9T	----

DRAWING No.	MATERIAL	GLAND
ME2-0697-7	R35	M20x1,5
ME2-0697-8	R35	G1/2"
ME2-0697-9	1H18N9T	M20x1,5
ME2-0697-10	1H18N9T	G1/2"

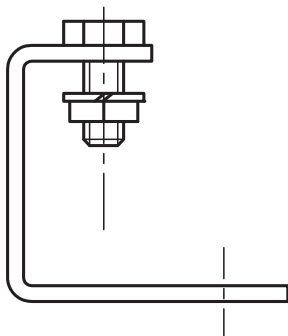
6. BRACKETS, CLAMPING RINGS



6.1. Complete bracket

The complete bracket enables to assembly transmitters against the wall, or on the 2" pipe.
The complete clamping ring, drg. no. EP2-1269- , has to be ordered additionally for assembling on the pipe.

DRAWING No.	MATERIAL
ME2-0399-1	08XIIG
ME2-0399-2	1H18N9T



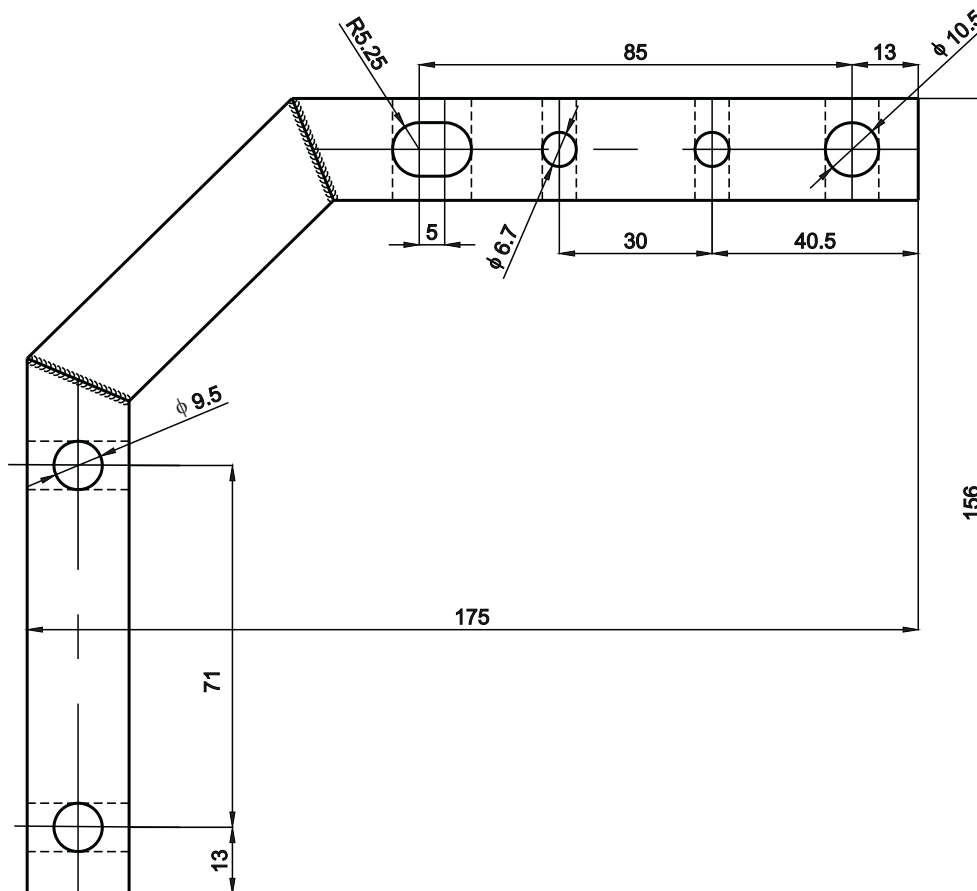
6.2. Complete bracket

The complete bracket enables to assembly the transmitters against the wall, or on the 2" pipe.
The complete clamping ring, drg. no. EP2-1269-, has to be ordered additionally for assembling on the pipe.

DRAWING No.	MATERIAL
ME2-0397-1	08XIIG
ME2-0397-2	1H18N9T

6.3. Bracket

The bracket enables to assembly transmitters in arbitrary position on the pipe or wall.

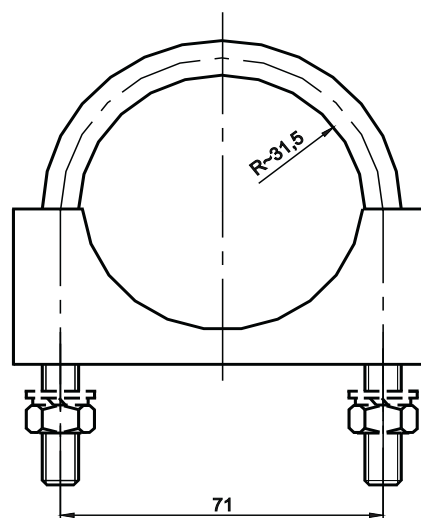


DRAWING No.	MATERIAL
EP1-1666-1	St3
EP1-1666-2	1H18N9T

The clamping rings EP-1269- have to be additional ordered for assembling on the pipe.

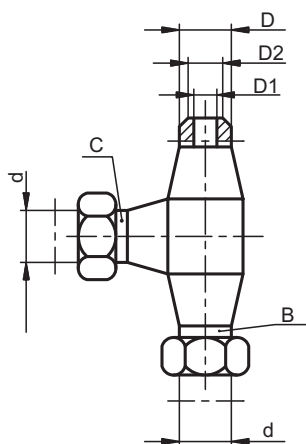
6.4. Clamping ring

The clamping ring enables to assembling transmitters on pipe 2".



DRAWING No.	MATERIAL
EP2-1269-1	15 HM
EP2-1269-2	1H18N9T

7. "T"- CONNECTIONS



D	10	13.5	16	18	25
D1	6	9	10	11	17
D2	8	10	12	14	20
d	12 ^{±0.08}	14 ^{±0.08}			

7.1. Straight T-connections

The straight T-connection is designed for connecting three impulse pipes by means of welding or self-locking rings.

The ends A, B, C can be made acc. to dimensions given in the table, in any combination. We can make the diameters different from those given in the table, upon special order. One should give the drawing no. and the ends dimensions when ordering, for e.g. ME1-0...-1

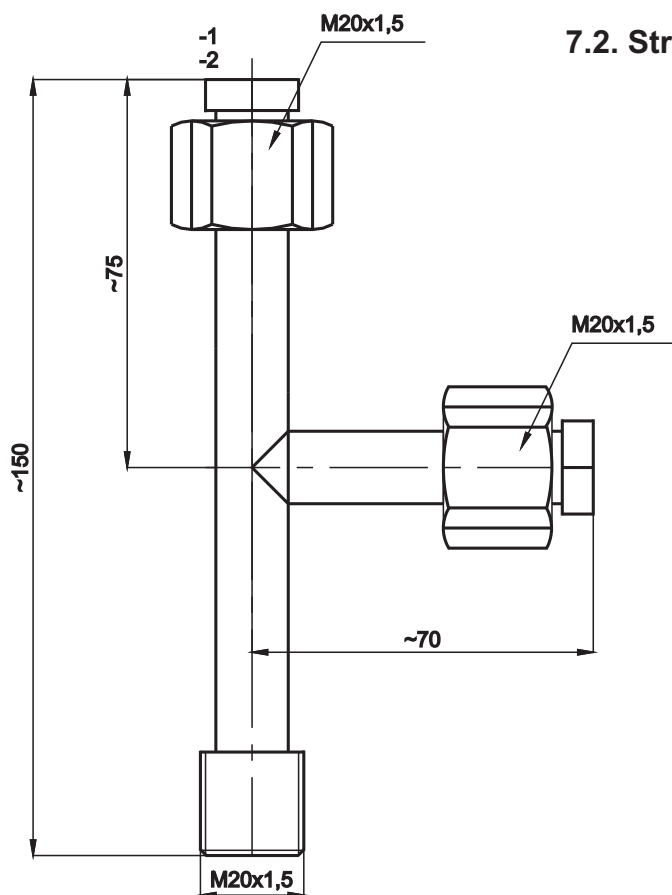
A = 10

B = 18

C = 12^{±0.08}

Such order means that the T-connection will be made of material - 20, will have two welding ends of 10mm and 18mm dia and one end with self-locking ring of $\phi 12^{\pm 0.08}$

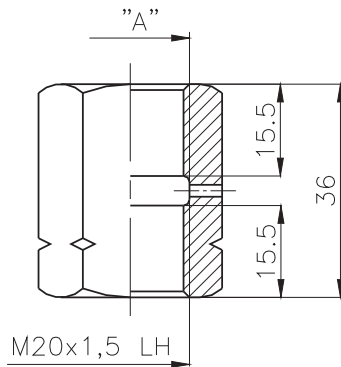
DRAWING No.	MATERIAL	DIMENSIONS OF A, B, C
ME2-0460-1	20	Have to be determine in the order - max. 25 dia
ME2-0460-2	15HM	
ME2-0460-3	10H2M	
ME2-0460-4	316	
ME2-0460-5	13HMF	



7.2. Straight T-connection

DRAWING No.	MATERIAL
ME2-0698-1	R35
ME2-0698-2	1H18N9T

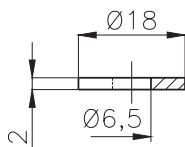
8. MANOMETRIC CONNECTION FOR VALVES (MANIFOLDS)



8.1. "Roman" nut

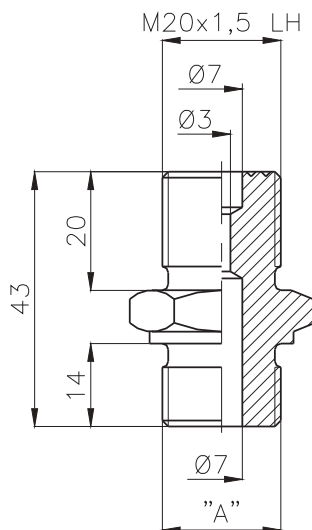
"Roman" nut enables to connection two manometric ends

DRAWING No.	DIMENSION "A"	MATERIAL
ME1-0421-1	M20 x 1,5	15HM
ME1-0421-2	M20 x 1,5	1H18N9T
ME1-0421-3	G1/2"	15HM
ME1-0421-4	G1/2"	1H18N9T
ME1-0421-5	R1/2"	15HM
ME1-0421-6	R1/2"	1H18N9T



8.2 Insert type ME1-0424

DRAWING No.	MATERIAL
ME1-0424-1	ME1Ez4
ME1-0424-2	1H18N9T
ME1-0424-3	TARFLEN



8.3 Manometric conection

Manometric conection enables to connect device with pressure instalation

DRAWING No.	MATERIAL	THREAD "A"
ME1-0706-1	15HM	M20x1,5
ME1-0706-2	1H18N9T	M20x1,5
ME1-0706-3	15HM	G1/2"
ME1-0706-4	1H18N9T	G1/2"
ME1-0706-5	15HM	R1/2"
ME1-0706-6	1H18N9T	R1/2"
ME1-0706-7	15HM	1/2"NPT
ME1-0706-8	1H18N9T	1/2"NPT

The right of introducing design changes in the product, without deteriorating of its operation parameters, is reserved.