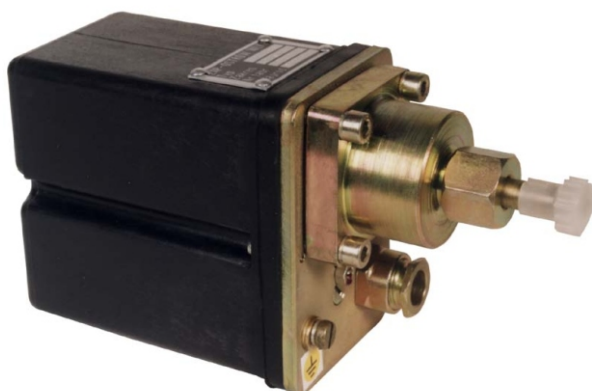


## ELECTRIC TWO-TERM PRESSURE SWITCHES TYPE ERP-01



- pressure range from 0,03 to 3,2 MPa
- max temperature of medium 120°C
- arbitrary working position
- they perform requirements of directive PED 97/23/WE (art.3, par.3)

THE ELECTRIC PRESSURE SWITCHES ARE DESIGNED FOR TWO-TERM PRESSURE CONTROL OF STEAM, WATER, OIL AND AIR. THE SWITCHES MAINTAIN THE SET-POINT PRESSURE VALUE IN THE INTERVAL DETERMINED BY THE SET DIFFERENTIAL PRESSURE. MOREOVER, THE UNITS CAN BE APPLIED AS SIGNALLING ELEMENTS OF PRESSURE EXCEEDING OR PRESSURE DROP IN VARIOUS DEVICES.

ELECTRIC TWO-TERM PRESSURE SWITCHES TYPE ERP-01- PERFORM REQUIREMENTS OF DIRECTIVE PED 97/23/WE PRESSURE SYSTEMS (ART. 3 PAR.3) AND THEY ARE MADE WITH ACKNOWLEDGED ENGINEERING PRACTICE.

### TECHNICAL DATA

Parameters	ERP-01-00	ERP-01-01	ERP-01-02	ERP-01-03
Pressure control range	0.03...0.15 MPa	0.1...1 MPa	0.3...2 MPa	0.4...4 MPa
Differential pressure	0.03...0.1 MPa	0.1...0.5 MPa	0.15...0.6 MPa	0.4...1.5 MPa
Static pressure of the medium	0.2 MPa	1.6 MPa	2.5 MPa	4.5 MPa
Repeatability	±2%			
Permissible temperature of the medium	120°C			
Ambient temperature	-20°C...+80°C			
Casing protection degree	IP 55			
Mass	0.8 kg			

### ELECTRIC PARAMETERS OF MICROSWITCH:

Rated switching voltage  $U_e$   
AC-15 230V; 50...60Hz  
DC-13 220V=

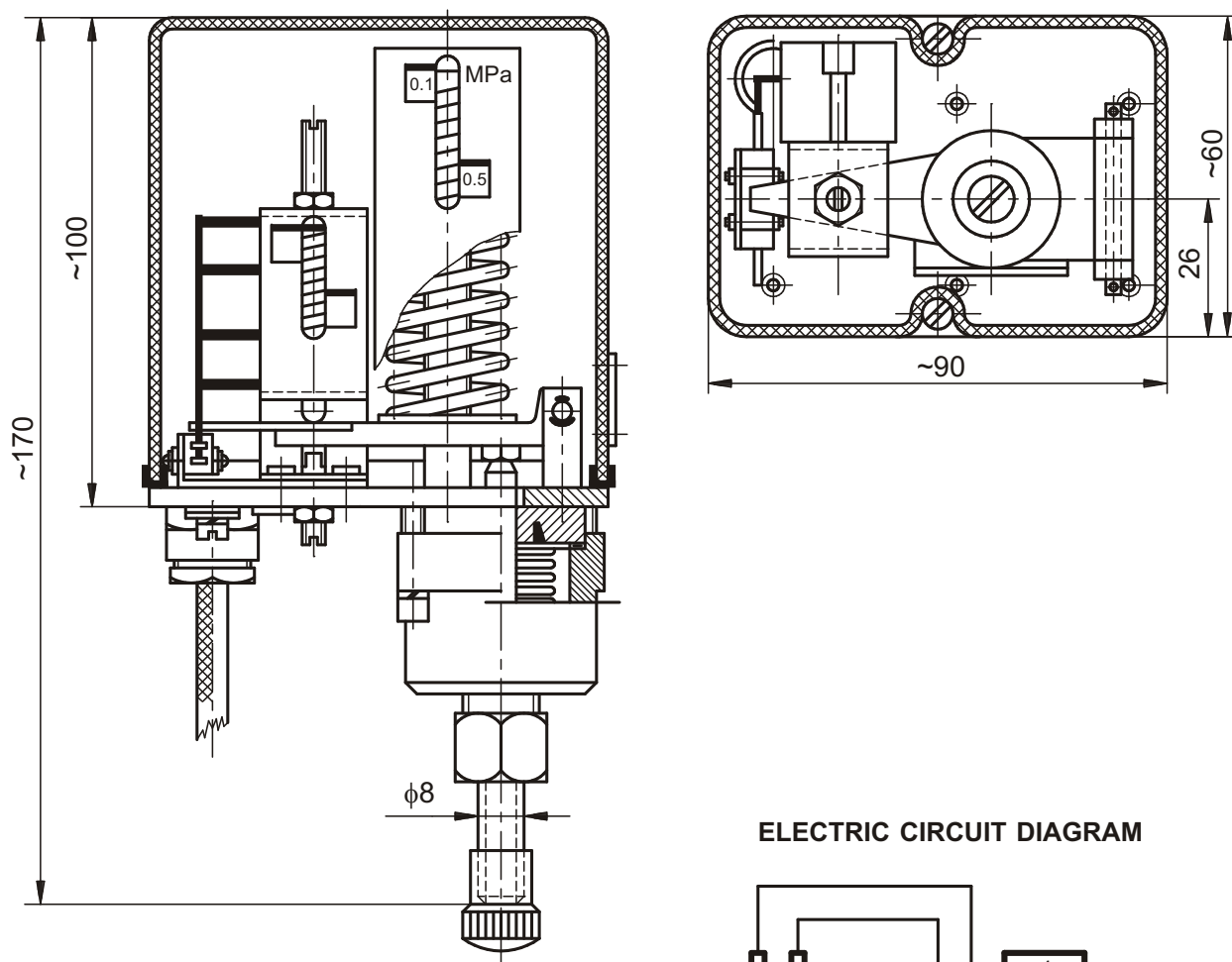
Rated switching currents:  
 $I_e$  / AC 15  $U_e$  230V; 50...60Hz 2,5A  
 $I_e$  / DC 13 220V; 0,6A

Switching durability:  
AC-15  $85 \times 10^3$   
DC-13  $30 \times 10^3$

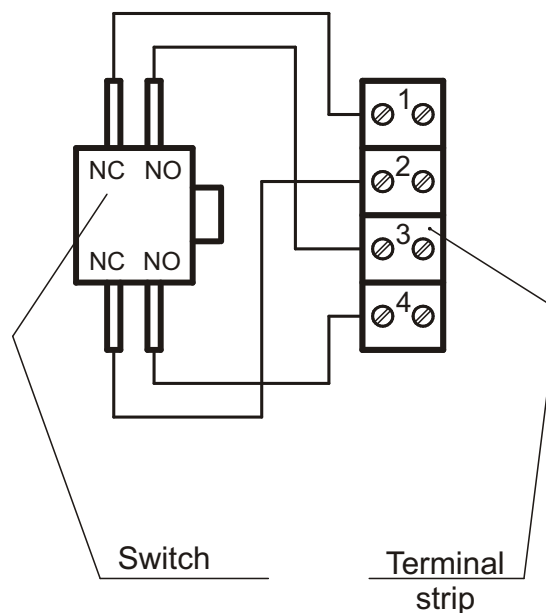
Minimal voltage and switching current: 10V; 20mA

Cross sections of connecting wires - for single-core wires: 1 sq. mm  
- for multile-core wires: 1 sq. mm

# DIMENSIONED DRAWINGS



## ELECTRIC CIRCUIT DIAGRAM



## ORDERING

One should give the in the order: switch full name and type, e.g.:

**Electric two-term pressure switch type ERP-01-00**

The right of introducing design changes in the product, without deteriorating of its operation parameters, is reserved.