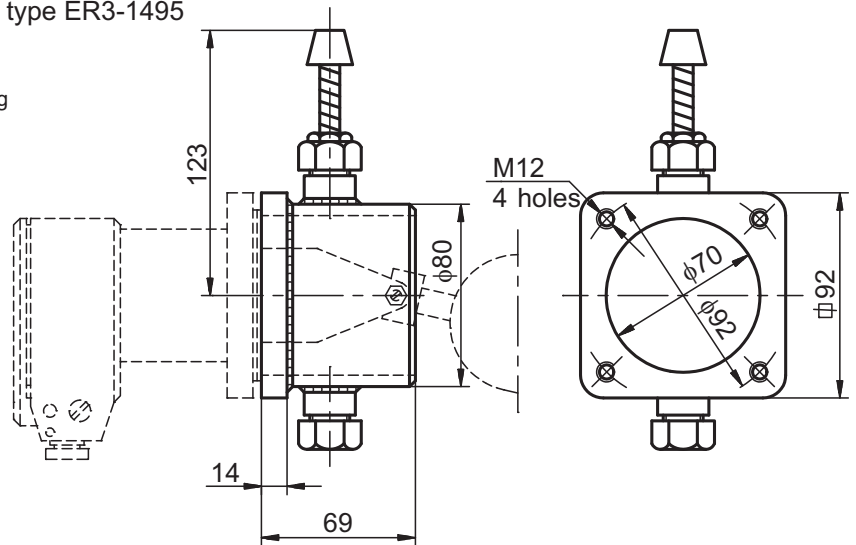


EQUIPMENT FOR LEVEL SWITCHES

TESTING EQUIPMENT

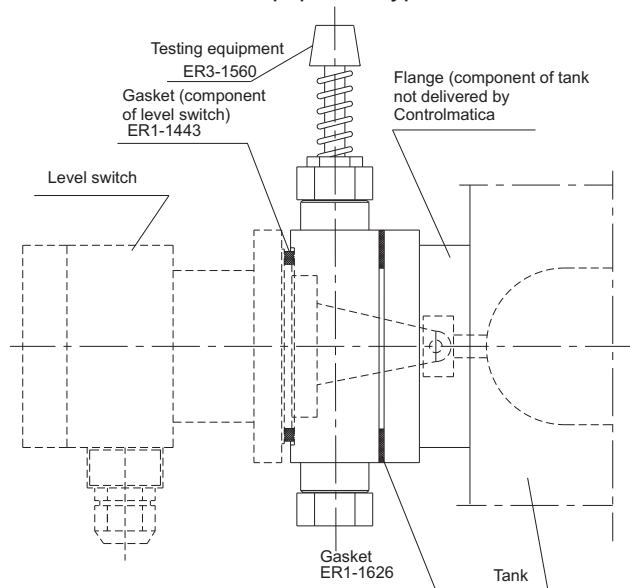
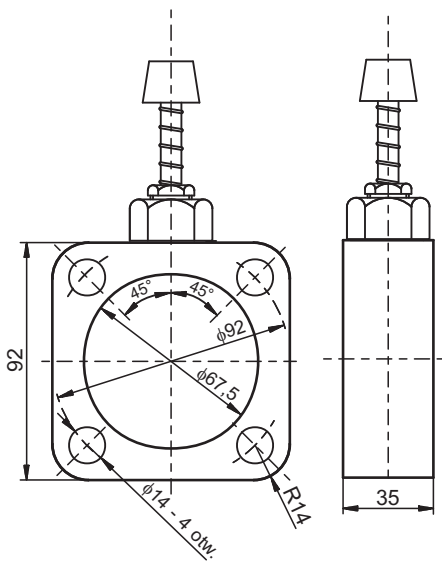
Testing equipment for permanent assembling, type ER3-1495

Testing equipment is designed for mechanical testing of electric casings / housings, without disassembling switch off the tank.



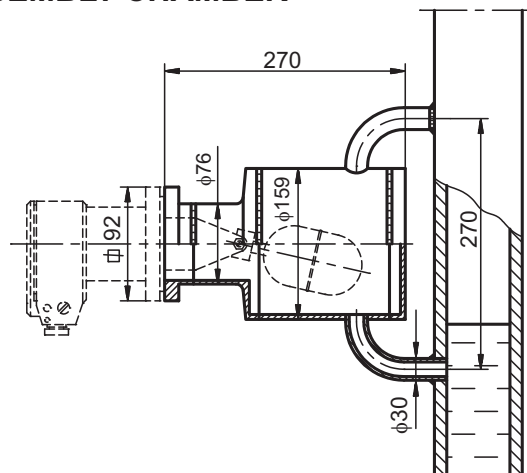
Testing equipment for separable assembling, type ER3-1560

Example of building of level switch type ERH- and equipment type ER3-1560



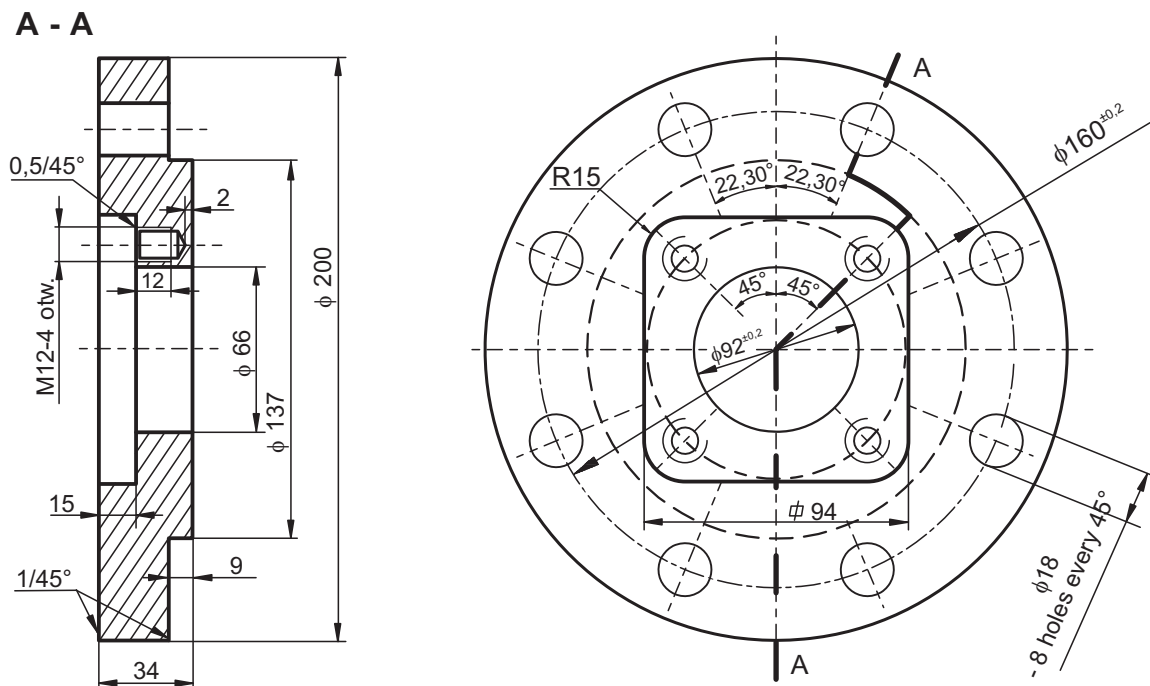
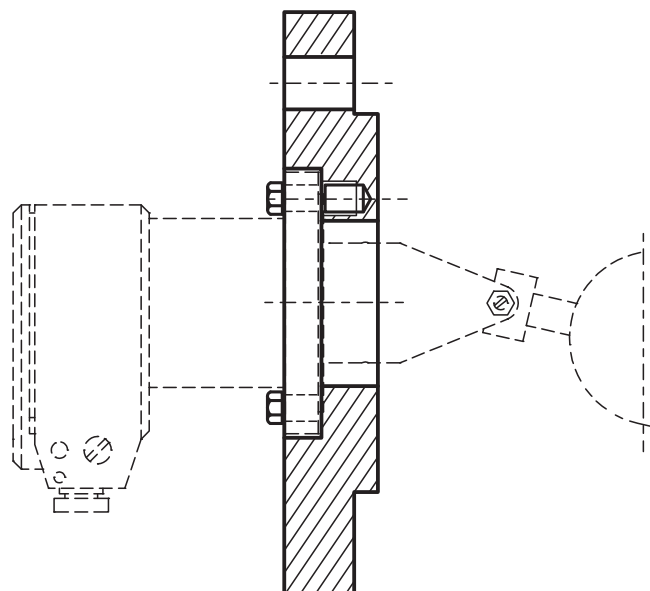
ASSEMBLY CHAMBER

The assembly chamber ER3-1631 is designed for mounting of the level switches on pipelines and small-sized tanks.



FIXING FLANGE type DN 80

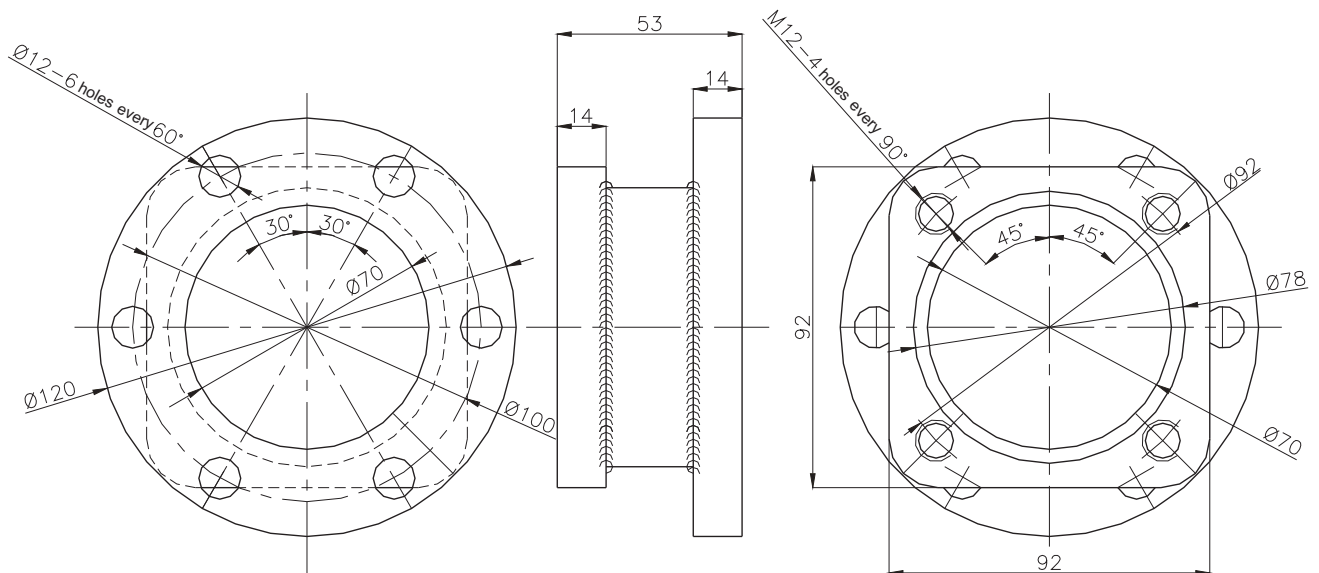
Fixing flange type ER2-1587 acc. to PN-83/H-02651 may be used as reduction of flange at dimension 92 x 92 for level switches: ERH-...-04; ERH-...-06; ERH-...-07; ERH-...-16.
Fixing flange is made form 1H18N9T material.

DIMENSION DRAWING OF FIXING FLANGE**FLANGE CONNECTION WITH LEVEL SWITCH**

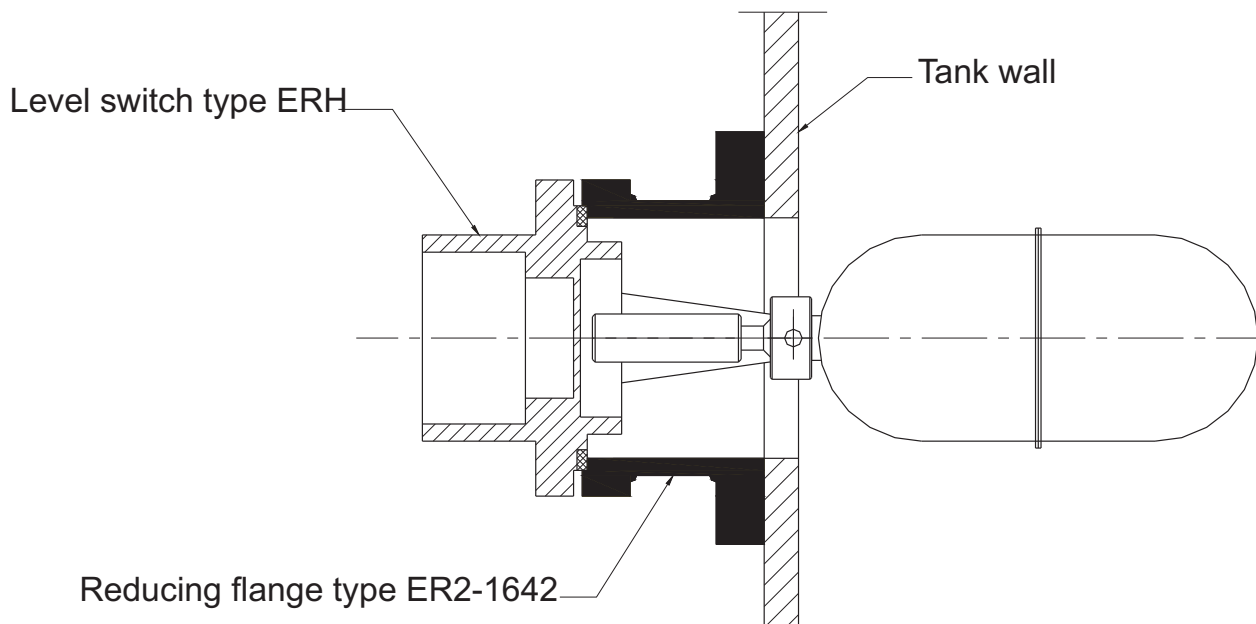
REDUCING FLANGE

Reducing flange type ER2-1642 may be used as reduction of flange at dimension 92 x 92 for level switches: ERH-...-04; ERH-...-06; ERH-...-07; ERH-...-16.

DIMENSION DRAWING OF REDUCING FLANGE



FLANGE CONNECTION WITH LEVEL SWITCH



ORDERING

One should give full product name and equipment type symbol in the order, e.g.
Testing equipment type ER3-1560

The right of introducing design changes in the product, without deteriorating of its operation parameters, is reserved.